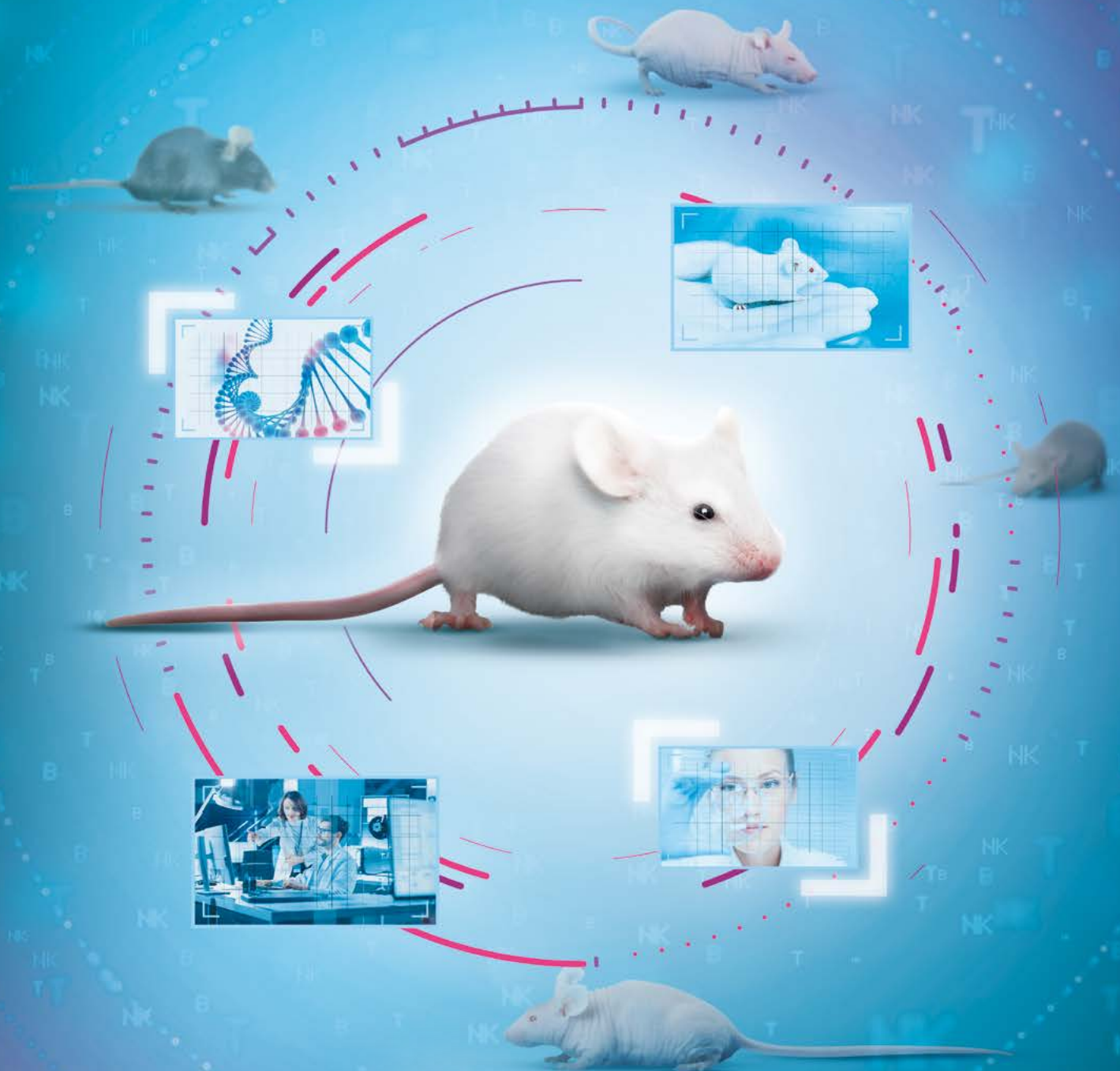


ENTER IN OUR

「360° MODEL RANGE」



➤ Discover the **NXG** model and all our range

OUR IMMUNO-ONCOLOGY RESEARCH MODELS

360° MODEL RANGE

www.janvier-labs.com

JANVIER
Expertise in Rodent
Research Models **LABS**



COMMITTED TO RESEARCH FOR MORE THAN 60 YEARS

Founded in 1960, JANVIER LABS is an independent company specialised in breeding of laboratory rodents and associated services.

As an international player in the field of biomedical research, JANVIER LABS provides scientists (biotech and pharmaceutical companies, academics) with a comprehensive range of rodent research models from model creation, reproductive sciences, customized breeding to laboratory services.

JANVIER LABS offers solutions adapted to your needs in order to ensure the success of your research programmes.

JANVIER LABS HAS THE LARGEST AND MOST ADVANCED BREEDING SITE IN EUROPE



1 unique production site
in Europe
22,000 sqm of facilities
on more than 8 hectares



Breeding capacity
3,000,000
rodents a year



45,000 km
a week travelled
by our integrated
transport department



3,000 customers
on worldwide
300 international
employees

60 YEARS EXPERTISE

JANVIER LABS provides scientists with immunodeficient models that fulfill the highest standards. With a unique state-of-the-art site based in Europe, JANVIER LABS ensures rigorous breeding conditions. Our experts bring broad expertise to guarantee the success of your research.

CONTROLLED MICROBIOTA

All our models have the same microbiota that is analyzed, monitored and stable over time

03

04

GENETIC STABILITY

JANVIER LABS GENETIC POLICY® allows to ensure the genetic homogeneity of all the strains

SOPF HEALTH QUALITY

Our robust health policy ensures the highest health standards for your models

02

05

SCIENTIFIC SUPPORT

A team of experts to assist you in the choice of the relevant models and to advice all along your research projects

IMMUNO-PHENOTYPING BY CENTRE IMMUNOPHENOMIQUE (CIPHE)

We work with recognized experts in immunology for a comprehensive characterization of our models

01

06

TRANSPORT

Our 100% in-house transport department ensures the welfare of your models and a delivery flexibility



OUR 360° IMMUNODEFICIENT MODELS

ADDED VALUE FOR YOUR RESEARCH

JANVIER LABS offers a range of immunodeficient models that are entirely characterized to support you during your research programmes.

IMMUNODEFICIENT MODELS: FIELDS OF APPLICATION

JANVIER LABS research models show different immunodeficiency levels so that each of your studies benefit from a model with its own immune characteristics. They cover numerous study areas such as:

- ✕ Infectious diseases
- ✕ The understanding of immune system and of its mechanisms
- ✕ The development of new vaccines and immunotherapy products
- ✕ Tissue grafts including tumors
- ✕ The development and the optimization of anti-cancer immunotherapies
- ✕ The development of new imaging methods
- ✕ The understanding inflammation process



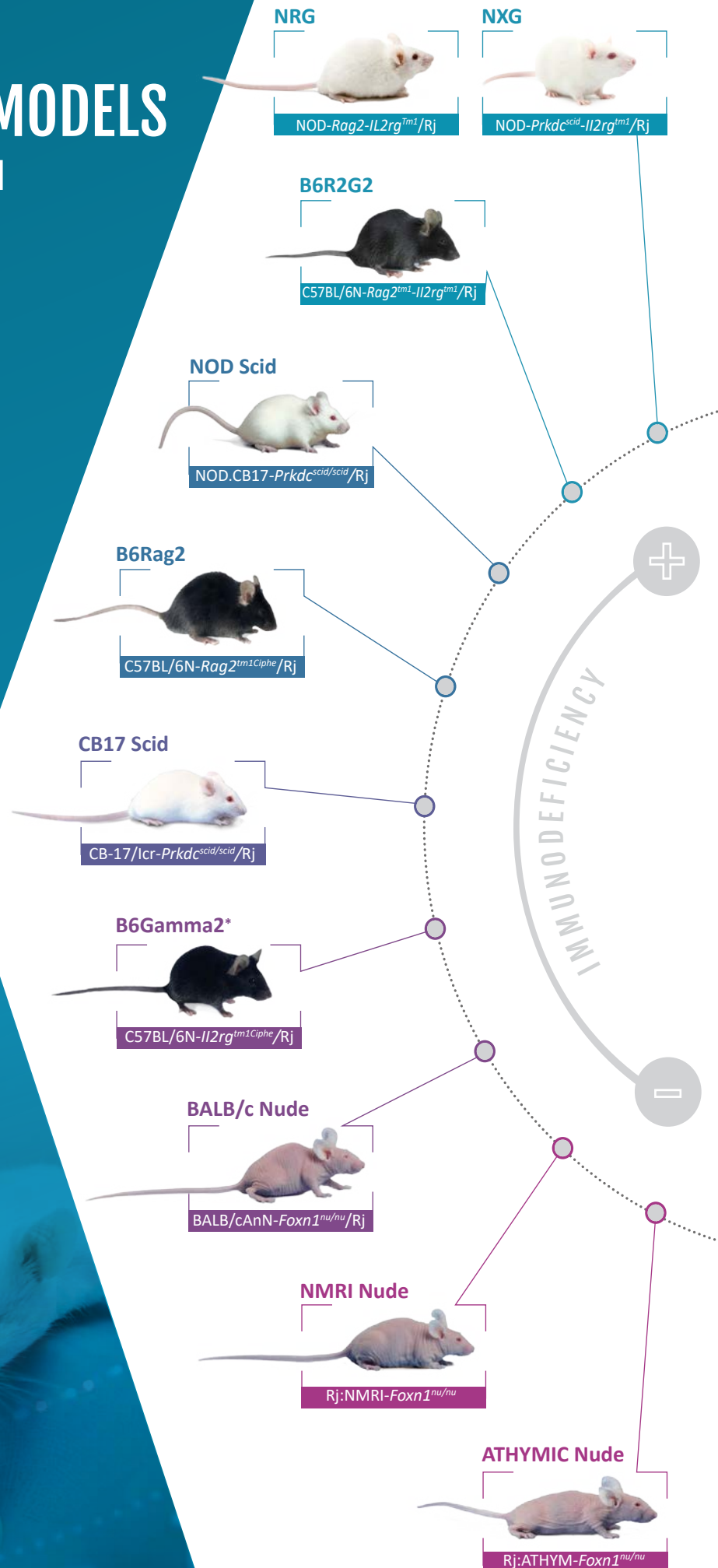
YOU DO NOT FIND YOUR MODEL?

Have your model created by experts in immunology

We work with the Centre Immunophénomique in Marseille, France, to provide you with a unique and integrated service offering:

- ✕ Creation
- ✕ Immunophenotyping
- ✕ Customized Breeding
- ✕ Laboratory services
- ✕ Transport

Contact us



OUR IMMUNODEFICIENT MOUSE MODELS

	NRG	NXG	B6R2G2	NOD Scid	B6Rag2	CB17 Scid	B6 Gamma2*	BALB/c Nude	NMRI Nude	ATHYMIC Nude
Background	NOD	NOD	C57BL/6NRj	NOD	C57BL/6NRj	CB17	C57BL/6NRj	BALB/c	NMRI	BALB/c
Breeding	Inbred	Inbred	Inbred	Inbred	Inbred	Inbred	Inbred	Inbred	Outbred	Outbred
Coat	Albino	Albino	Black	Albino	Black	Albino	Black	Nude	Nude	Nude
T Lymphocytes	Absent	Absent	Absent	Absent	Absent	Absent	+/-	Absent	Absent	Absent
B Lymphocytes	Absent	Absent	Absent	Absent	Absent	Absent	+/-	Normal	Normal	Normal
Leakiness	-	-	-	Medium	-	High	-	-	-	-
NK cells	Absent	Absent	Absent	Dysfunctional	Normal	Low	Absent	Normal	Normal	Normal
Dendritic cells	Dysfunctional	Dysfunctional	Dysfunctional	Low	Dysfunctional	Low	+/-	Normal	Normal	Normal
Macrophages	Dysfunctional	Dysfunctional	Normal	Dysfunctional	Normal	Dysfunctional	Normal	Normal	Normal	Normal
Complement	-	-	Normal	-	Normal	Normal	Normal	Normal	Normal	Normal
Irradiation tolerance	High	Low	High	Low	High	Low	High	High	High	High
Life span	89 Wk.	89 Wk.	Min 54 Wk.	36 Wk.	Min 54 Wk.	36 Wk.	Min 54 Wk.	54 Wk.	54 Wk.	54 Wk.
Humoral immunity	Absent	Absent	Absent	Absent	Absent	Absent	Absent	Normal	Normal	Normal
Lymphoma outcome	Indefinite	Low	Indefinite	High	Indefinite	Low	Indefinite	Indefinite	Indefinite	Indefinite
Genes of interest	RAG 2 IL2rg	Scid (Prkdc) IL2rg Sirpa	RAG 2 IL2rg	Scid (Prkdc)	RAG 2	Scid (Prkdc)	IL2rg	Foxn1	Foxn1	Foxn1

*Cryopreserved



PHENOTYPIC CHARACTERISATION

All our models are entirely characterized. The immunological and haematological parameters were characterized by Centre Immunophénomique (Ciphe) in Marseille, France.

01 HAEMATOLOGICAL PARAMETERS

Designation	Unit
Red blood cell absolute count	(x1E6/uL)
Platelet absolute count	(x1E3/uL)
Reticulocyte absolute count	(x1E3/uL)
White blood cell count	(x1E3/uL)
Reticulocytes percentage	(%)
Hematocrite	(%)
Mean corpuscular hemoglobin	(pg)
Hemoglobin	(g/dL)
Mean corpuscular hemoglobin concentration	(g/dL)
Mean corpuscular volume	(f1-)
Platelet larger cell ratio	(0/0)
Plateletcrit	(%)
Low fluorescence ratio reticulocyte	(%)
Medium fluorescence ratio reticulocyte	(%)
High fluorescence ratio reticulocyte	(%)
Immature reticulocyte fraction	(%)



02 IMMUNOLOGICAL PARAMETERS

All our immunodeficient models were immunophenotyped.

Example of a cytometric analysis of the spleen of our B6R2G2 and C57BL/6N (Wild Type) models.

Contact us

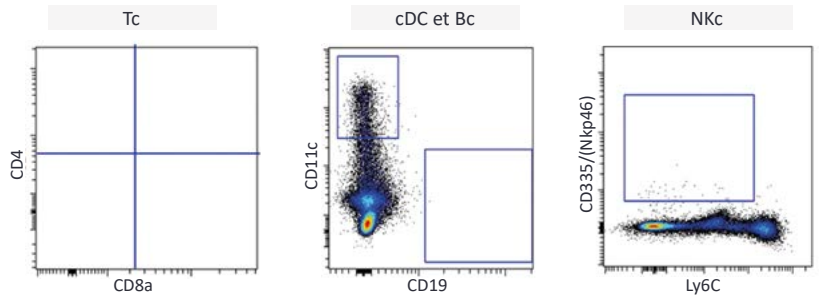


All lymphoid organs of our models were analysed in most of the 12 cell populations below.



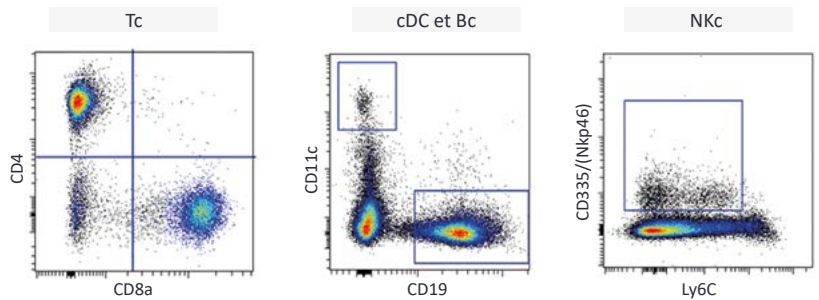
B6R2G2

C57BL/6N-Rag2^{tm1}-Il2rg^{tm1}/Rj



C57BL/6N

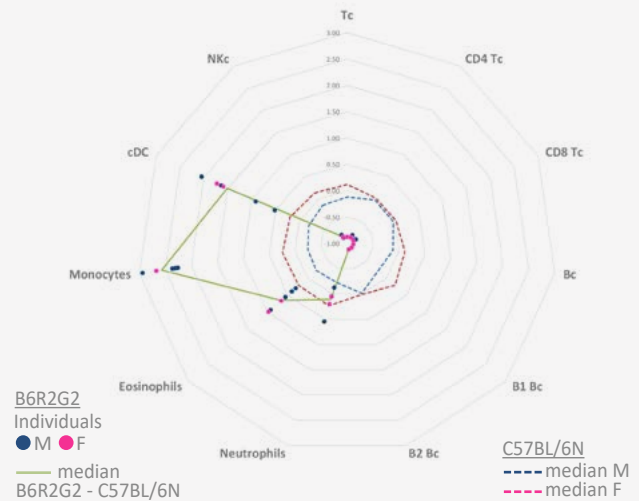
C57BL/6NRj



We also offer an immunophenotyping service for the immunodeficient models at each stage of your research protocols.

Contact us

COMPARISON RADAR CHART B6R2G2 VS C57BL/6N



OUR IMMUNODEFICIENT RAT MODELS

JANVIER LABS also offers immunodeficient rat models. All our rat models have no T lymphocyte.

FISCHER Nude

F344/HanZtm-Foxn1^{nu}/Rj



LOU Nude*

LOU/M-Foxn1^{nu}/Rj



ATHYMIC Nude

Rj:ATHYM-Foxn1^{nu}



*Cryopreserved





contact@janvier-labs.com

Tel +33 (0)2 43 02 11 91

www.janvier-labs.com