



RESEARCH MODELS

Rats

Mice

Other rodents



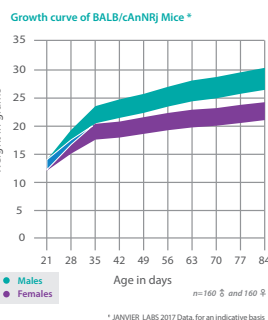
BALB/cAnNRj Mouse

- **Strain name:** BALB/cAnNRj
- **Type:** Inbred mouse
- **Origin:** National Institutes of Health (USA) - 1996 (F184)
- **Colour and related genotype:** Albino mouse, *Tyr^c/Tyr^c, Tyrp1^b/Tyrp1^b, A/A - MHC: Haplotype H2^d*
- **Breeding:** Good breeder with better performances than BALB/cJRj and BALB/cByJRj mice

Description of our model

This strain was selected by MacDOWELL from an albino outbred stock and then sent to Dr SNELL (The Jackson Laboratory) in 1935 (generation F26). The "c" was added by Dr SNELL to indicate that the genotype at the colour locus was c/c (albinism). In 1935, Dr SNELL sent breeders to Drs HESTON and ANDERVONT at the NIH. Dr ANDERVONT's substrain was incorporated into NIH main colonies in 1951. **BALB/cAnNRj** mice achieve better ascites production than other strains derived from Dr ANDERVONT's.

BALB/cAnNRj mice can show ulcerative blepharitis and periorbital abscesses. They can also present with hydrocephalus and malocclusion. Due to its good breeding performance, this strain is used in the production of embryos for transgenesis (QUICKBLASTO®). The QUICKBLASTO®, a JANVIER LABS's product, is a kit containing straws of frozen embryos at the morula stage (C57BL/6NRj or BALB/cAnNRj). With these embryos, after thawing and culture, you will have blastocysts ready to receive your embryonic stem cells.



| Hematological parameters* of 10-week old BALB/cAnNRj mice | | | Reproductive data* | |
|---|-------------|-------------|----------------------|------------------------|
| Parameters | Male | Female | | |
| Erythrocytes (10 ¹² /l) | 10.8 ± 0.2 | 10.5 ± 0.4 | Bigamous mating | |
| Hematocrit (l/l) | 0.60 ± 0.02 | 0.58 ± 0.02 | Litter size at birth | 5.37 |
| Hemoglobin (g/dl) | 16.4 ± 0.4 | 16.4 ± 0.6 | Weaning % | 95 |
| Mean corpuscular volume (fl) | 55 ± 1 | 55 ± 1 | Productivity index | 0.98 |
| Mean corpuscular rate (pg) | 15.1 ± 0.3 | 15.8 ± 0.4 | Sterility % | 3 |
| Hemoglobin concentration (g/dl) | 28 ± 1 | 28 ± 1 | Gestation time | Between 18 and 20 days |
| Blood platelets (10 ⁹ /l) | 1260 ± 216 | 1137 ± 172 | | |
| Leukocytes (10 ⁹ /l) | 11.4 ± 1.9 | 11.0 ± 2.8 | | |
| Neutrophils (10 ⁹ /l) | 1.94 ± 0.49 | 1.21 ± 0.23 | | |
| Lymphocytes (10 ⁹ /l) | 8.69 ± 1.44 | 8.67 ± 2.28 | | |
| Eosinophils (10 ⁹ /l) | 0.44 ± 0.17 | 0.45 ± 0.14 | | |
| Monocytes (10 ⁹ /l) | 0.17 ± 0.07 | 0.16 ± 0.08 | | |
| Basophils (10 ⁹ /l) | 0.00 ± 0.00 | 0.06 ± 0.06 | | |

| Biochemical blood parameters* of 10-week old BALB/cAnNRj mice | | |
|---|-----------|-----------|
| Parameters | Male | Female |
| Glucose (g/l) | 2.3 ± 0.5 | 2.9 ± 0.5 |
| Urea (g/l) | 0.4 ± 0.1 | 0.6 ± 0.0 |
| AST (ASAT) (U/l) | 144 ± 55 | 173 ± 105 |
| ALT (ALAT) (U/l) | 55 ± 29 | 60 ± 37 |
| Alkaline phosphatase (U/l) | 144 ± 12 | 154 ± 17 |
| Cholesterolaemia (g/l) | 1.4 ± 0.1 | 1.1 ± 0.1 |
| Triglycerides (g/l) | 2.4 ± 0.6 | 4.0 ± 1.0 |
| Creatinine (mg/l) | 4.4 ± 0.7 | 4.4 ± 0.5 |

* JANVIER LABS 2013 Data, for an indicative basis



www.janvier-labs.com

Main application and research fields

- Cardiovascular research
- Immunology: ascites production, monoclonal antibodies
- Inflammation
- Neurobiology
- Oncology
- Parasitology
- Toxicology
- Transgenesis: embryo production

Our additional offer



Laboratory Services



Transgenic Services

Our added value

- The « JANVIER LABS Genetic Policy », a specific programme, guarantees homozygosity of autosomal pairs.
- Animals with the SPF or SOPF standards.
- A gentling policy for docile and easy-to-handle animals.
- Optimal stability conditions of our models during shipments, thanks to our dedicated and internal transport service.
- A scientific support with a team of Veterinarians and PhD.

The available scientific bibliography:

Research has been conducted, all over the world, from models bred in our laboratories. Discover our updated bibliography of available studies on our Internet website, heading: Customer Support.