



# RESEARCH MODELS

Rats

Mice

Other rodents



## DARK AGOUTI Rat

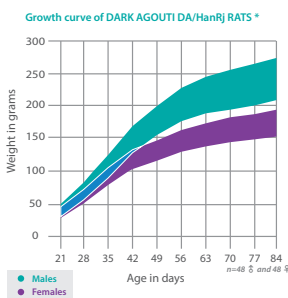
- **Strain name:** DA/HanRj
- **Type:** Inbred rat
- **Origin:** Zentralinstitut für Versuchstierzucht (Hannover) - 1990
- **Colour and related genotype:** Agouti rat, A/A, B/B, C/C, H/H, P/P - MHC: RT1<sup>av1</sup>  
Erythrocyte antigens: RT2<sup>b</sup> RT8<sup>b</sup> - Lymphocyte antigens: RT6<sup>b</sup> RT7<sup>a</sup>
- **Breeding:** Difficult to rear

### Description of our model

This strain was bred by Dr T.T. ODELL Jr. from stock of unstated origin at the OAK Ridge National Laboratory, Tennessee (USA) up to generation F11. It was then transferred to Dr Darcy WILSON at the WISTAR INSTITUTE, who named it **DARK AGOUTI** because of its colour and because it expressed the d blood group allele. PALM and BLACK suggested that this strain could be related to the COP strain (1971).

This strain develops spontaneous urinary bladder tumours (54 % in males and 14 % in females) with a peak incidence between 25 and 30 months. This strain is susceptible to the induction of autoimmune thyroiditis.

The **DARK AGOUTI** is a very good model for acute and chronic arthritis because it is highly susceptible to its induction by type II rat collagen or Freund's adjuvant.



Hematological parameters* of 10-week old DARK AGOUTI DA/HanRj rats			Reproductive data <sup>†</sup>	
Parameters	Male	Female	Monogamous mating	
Erythrocytes (10 <sup>12</sup> /l)	9.1 ± 0.2	8.7 ± 0.5	Litter size at birth	6.23
Hematocrit (l/l)	0.51 ± 0.01	0.48 ± 0.03	Weaning %	98
Hemoglobin (g/dl)	14.8 ± 0.2	14.7 ± 0.5	Productivity index	1.44
Mean corpuscular volume (fl)	56 ± 1	56 ± 1	Sterility %	1
Mean corpuscular rate (pg)	16.2 ± 0.4	17.1 ± 0.6	Gestation time	Between 20 and 23 days
Hemoglobin concentration (g/dl)	29 ± 1	31 ± 1		
Blood platelets (10 <sup>9</sup> /l)	934 ± 95	853 ± 138		
Leukocytes (10 <sup>9</sup> /l)	9.9 ± 2.0	9.2 ± 1.9		
Neutrophils (10 <sup>9</sup> /l)	1.56 ± 0.95	0.81 ± 0.42		
Lymphocytes (10 <sup>9</sup> /l)	7.93 ± 0.97	7.94 ± 1.65		
Eosinophils (10 <sup>9</sup> /l)	0.10 ± 0.02	0.10 ± 0.02		
Monocytes (10 <sup>9</sup> /l)	0.13 ± 0.08	0.15 ± 0.09		
Basophils (10 <sup>9</sup> /l)	0.11 ± 0.07	0.09 ± 0.02		

Biochemical blood parameters* of 10-week old DARK AGOUTI DA/HanRj rats		
Parameters	Male	Female
Glucose (g/l)	1.8 ± 0.2	2.0 ± 0.2
Urea (g/l)	0.4 ± 0.0	0.4 ± 0.1
AST (ASAT) (U/l)	154 ± 37	129 ± 32
ALT (ALAT) (U/l)	105 ± 27	79 ± 17
Alkaline phosphatase (U/l)	159 ± 12	104 ± 16
Cholesterolaemia (g/l)	1.0 ± 0.2	1.2 ± 0.2
Triglycerides (g/l)	1.0 ± 0.3	1.0 ± 0.5
Creatinine (mg/l)	5.3 ± 0.5	5.7 ± 0.5

\* JANVIER LABS 2013 Data, for an indicative basis



[www.janvier-labs.com](http://www.janvier-labs.com)

### Main application and research fields

- Arthritis
- Immunology
- Oncology
- Transplantation

### Our additional offer



Laboratory Services



Transgenic Services

### Our added value

- The « JANVIER LABS Genetic Policy », specific programme, guarantees homozygosity of autosomal pairs.
- Animals with the SPF or SOPF standards.
- A gentling policy for docile and easy-to-handle animals.
- Optimal stability conditions of our models during shipments, thanks to our dedicated and internal transport service.
- A scientific support with a team of Veterinarians and PhD.

### The available scientific bibliography:

Research has been conducted, all over the world, from models bred in our laboratories. Discover our updated bibliography of available studies on our Internet website, heading: Customer Support.