



RESEARCH MODELS

Rats

Mice

Other rodents



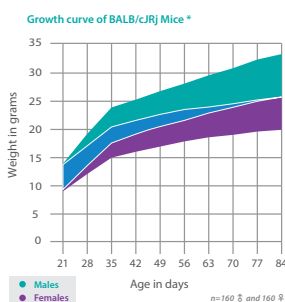
BALB/cJRj Mouse

- **Strain name:** BALB/cJRj
- **Type:** Inbred mouse
- **Origin:** Zentralinstitut für Versuchstierzucht (Hannover) - 1988 (F172)
- **Colour and related genotype:** Albino mouse, *Tyr^c/Tyr^c, Tyrp1^b/Tyrp1^b, A/A* - MHC: Haplotype *H2^d*
- **Breeding:** Difficult to rear

Description of our model

The strain was selected by MacDowell from a stock of outbred albino mice then transferred to Snell (The Jackson Laboratory) at F26 in 1935. The "c" was added to the strain name by Dr Snell to indicate that the genotype for the colour locus is *c/c*, hence the name BALB/c. 1935: From Dr Snell to Drs Heston and Andervont (NIH), separation of the BALB/cJ and BALB/cByJ strains at the F38 generation, when some of Dr Snell's BALB/cSn mice were transferred to Drs Andervont and Heston. 1974: Breeders were transferred to the Production Department of The Jackson Laboratory at F136 and the J was added.

BALB/cJRj can suffer from ulcerative blepharitis and periocular abscesses. They can also present with hydrocephalus and malocclusion.



Hematological parameters* of 10-week old BALB/cJRj mice			Reproductive data*	
Parameters	Male	Female		
Erythrocytes (10 ¹² /l)	10.3 ± 0.7	10.4 ± 0.5	Litter size at birth	5.8
Hematocrit (l/l)	0.57 ± 0.03	0.57 ± 0.03	Weaning %	91
Hemoglobin (g/dl)	15.5 ± 0.7	16.0 ± 0.8	Productivity index	0.79
Mean corpuscular volume (fl)	55 ± 1	56 ± 1	Sterility %	2
Mean corpuscular rate (pg)	15.3 ± 0.5	15.5 ± 0.5	Gestation time	Between 18 and 20 days
Hemoglobin concentration (g/dl)	27 ± 1	28 ± 1		
Blood platelets (10 ⁹ /l)	735 ± 188	621 ± 275		
Leukocytes (10 ⁹ /l)	5.1 ± 2.3	5.1 ± 2.0		
Neutrophils (10 ⁹ /l)	1.22 ± 0.37	1.28 ± 0.39		
Lymphocytes (10 ⁹ /l)	3.83 ± 1.95	3.62 ± 1.57		
Eosinophils (10 ⁹ /l)	0.20 ± 0.06	0.16 ± 0.07		
Monocytes (10 ⁹ /l)	0.05 ± 0.02	0.06 ± 0.03		
Basophils (10 ⁹ /l)	0.03 ± 0.04	0.02 ± 0.03		

Biochemical blood parameters* of 10-week old BALB/cJRj mice		
Parameters	Male	Female
Glucose (g/l)	2.1 ± 0.3	2.1 ± 0.3
Urea (g/l)	0.6 ± 0.1	0.8 ± 0.1
AST (ASAT) (U/l)	170 ± 50	233 ± 124
ALT (ALAT) (U/l)	58 ± 17	74 ± 52
Alkaline phosphatase (U/l)	194 ± 32	204 ± 48
Cholesterolaemia (g/l)	1.5 ± 0.3	1.1 ± 0.2
Triglycerides (g/l)	1.5 ± 0.5	1.9 ± 0.8
Creatinine (mg/l)	5.1 ± 0.4	5.2 ± 0.6

* JANVIER LABS 2011 Data, for an indicative basis



www.janvier-labs.com

Main application and research fields

- Cardiovascular research
- Immunology: ascites production, monoclonal antibodies
- Inflammation
- Neurology
- Oncology
- Parasitology
- Virology

Our additional offer



Laboratory Services



Transgenic Services

Our added value

- The « JANVIER LABS Genetic Policy », a specific programme, guarantees homozygosity of autosomal pairs.
- Animals with the SPF or SOPF standards.
- A gentling policy for docile and easy-to-handle animals.
- Optimal stability conditions of our models during shipments, thanks to our dedicated and internal transport service.
- A scientific support with a team of Veterinarians and PhD.

The available scientific bibliography:

Research has been conducted, all over the world, from models bred in our laboratories. Discover our updated bibliography of available studies on our Internet website, heading: Customer Support.