



RESEARCH MODELS

Rats

Mice

Other rodents



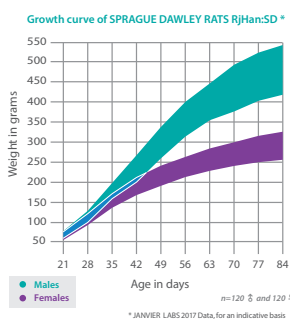
SPRAGUE DAWLEY® Rat

- **Strain name:** RjHan:SD
- **Type:** Outbred rat
- **Origin:** Zentralinstitut für Versuchstierzucht (Hannover) - 1982
- **Colour and related genotype:** Albino rat - *Tyr^c/Tyr^c*
- **Breeding:** Good breeder, strong maternal instinct

Description of our model

The strain was created by R. W. Dawley in 1925, from a hooded male hybrid of unknown origin and an albino female (probably Wistar), and was crossed with the female's progeny for 7 generations. The **SPRAGUE DAWLEY®** rat is an albino outbred rat with an elongated head and a tail that is longer than its body.

A fast growing rat, it is docile and easy to handle.



Hematological parameters* of 10-week old SPRAGUE DAWLEY® RjHan:SD rats			Reproductive data*	
Parameters	Male	Female	Monogamous mating according Robertson System	
Erythrocytes (10 ¹² /l)	8.5 ± 0.4	8.7 ± 0.2	Litter size at birth	11.9
Hematocrit (l/l)	0.55 ± 0.02	0.55 ± 0.03	Weaning %	94.5
Hemoglobin (g/dl)	15.4 ± 0.5	15.7 ± 0.8	Productivity index	3
Mean corpuscular volume (fl)	65 ± 3	63 ± 1	Sterility %	2
Mean corpuscular rate (pg)	18.2 ± 0.7	18.0 ± 0.5	Gestation time	Between 20 and 23 days • D20: 1 % • D21: 16 % • D22: 77 % • D23: 6 %
Hemoglobin concentration (g/dl)	28 ± 1	29 ± 1		
Blood platelets (10 ⁹ /l)	761 ± 153	751 ± 210		
Leukocytes (10 ⁹ /l)	11.5 ± 2.7	11.5 ± 2.7		
Neutrophils (10 ⁹ /l)	1.56 ± 0.49	1.36 ± 0.37		
Lymphocytes (10 ⁹ /l)	9.35 ± 2.15	9.62 ± 2.39		
Eosinophils (10 ⁹ /l)	0.14 ± 0.03	0.15 ± 0.06		
Monocytes (10 ⁹ /l)	0.31 ± 0.17	0.24 ± 0.10		
Basophils (10 ⁹ /l)	0.11 ± 0.03	0.12 ± 0.03		

Biochemical blood parameters* of 10-week old SPRAGUE DAWLEY® RjHan:SD rats		
Parameters	Male	Female
Glucose (g/l)	1.6 ± 0.1	2.1 ± 0.2
Urea (g/l)	0.4 ± 0.1	0.6 ± 0.1
AST (ASAT) (U/l)	160 ± 37	109 ± 17
ALT (ALAT) (U/l)	71 ± 10	55 ± 16
Alkaline phosphatase (U/l)	357 ± 60	92 ± 25
Cholesterolaemia (g/l)	0.9 ± 0.1	1.1 ± 0.1
Triglycerides (g/l)	1.5 ± 0.4	2.1 ± 0.5
Creatinine (mg/l)	6.1 ± 0.3	5.3 ± 0.8

* JANVIER LABS 2011 Data, for an indicative basis



www.janvier-labs.com

Main application and research fields

- Experimental surgery
- General studies
- Metabolism, nutrition
- Neurology
- Oncology
- Pharmacology
- Physiology, ageing
- Teratology
- Toxicology

Our additional offer



Laboratory Services



Transgenic Services

Our added value

- The « JANVIER LABS Genetic Policy », a specific programme, guarantees less than 1% inbreeding per generation.
- Animals with the SPF or SOPF standards.
- A gentling policy for docile and easy-to-handle animals.
- Optimal stability conditions of our models during shipments, thanks to our dedicated and internal transport service.
- A scientific support with a team of Veterinarians and PhD.

The available scientific bibliography:

Research has been conducted, all over the world, from models bred in our laboratories. Discover our updated bibliography of available studies on our Internet website, heading: **Customer Support**.