



# RESEARCH MODELS

Rats

Mice

Other rodents



## SWISS Mouse

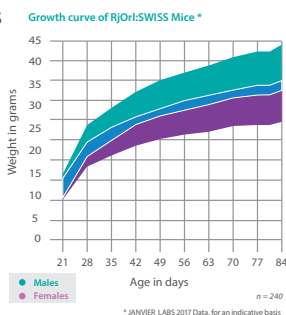
- **Strain name:** RjOrl:SWISS
- **Type:** Outbred mouse
- **Origin:** CSAL (Orleans) - 1965
- **Colour and related genotype:** Albino mouse - *Tyr<sup>c</sup>/Tyr<sup>c</sup>*
- **Breeding:** Good breeder, strong maternal instinct

### Description of our model

The strain was created from 2 outbred albino males and 7 outbred albino females originating from the "Centre Anticancéreux de Romand" (Lausanne, Switzerland) and imported to the Rockefeller Institute by Lynch (1926). The offspring are scattered around the world. Carworth Farm selected one line of mice for its vigour and productivity (1935).

Versatile outbred mouse, used in all areas of biomedical research (general studies), it is used as donor and/or recipient of embryos.

SOPF **SWISS** mice are ideal sentinels because they will readily seroconvert.



Hematological parameters* of 10-week old RjOrl:SWISS mice			Reproductive data*	
Parameters	Male	Female		
Erythrocytes (10 <sup>12</sup> /l)	9.4 ± 0.5	9.0 ± 0.8	Bigamous mating according Robertson System	
Hematocrit (l/l)	0.55 ± 0.02	0.53 ± 0.04	Litter size at birth	13.5
Hemoglobin (g/dl)	14.4 ± 0.7	14.9 ± 0.8	Weaning %	91
Mean corpuscular volume (fl)	59 ± 2	59 ± 1	Productivity index	3.35
Mean corpuscular rate (pg)	15.3 ± 0.5	16.7 ± 0.9	Sterility %	0
Hemoglobin concentration (g/dl)	26 ± 1	28 ± 1	Gestation time	Between 18 and 21 days • D18: 22 % • D19: 40 % • D20: 28 % • D21: 10 %
Blood platelets (10 <sup>9</sup> /l)	1100 ± 213	1059 ± 137		
Leukocytes (10 <sup>9</sup> /l)	7.8 ± 2.1	9.3 ± 3.1		
Neutrophils (10 <sup>9</sup> /l)	2.87 ± 0.97	1.41 ± 0.58		
Lymphocytes (10 <sup>9</sup> /l)	4.44 ± 1.80	7.26 ± 2.49		
Eosinophils (10 <sup>9</sup> /l)	0.26 ± 0.09	0.38 ± 0.16		
Monocytes (10 <sup>9</sup> /l)	0.19 ± 0.05	0.14 ± 0.06		
Basophils (10 <sup>9</sup> /l)	0.05 ± 0.05	0.08 ± 0.05		

Biochemical blood parameters* of 10-week old RjOrl:SWISS mice		
Parameters	Male	Female
Glucose (g/l)	2.5 ± 0.4	2.1 ± 0.2
Urea (g/l)	0.5 ± 0.1	0.5 ± 0.1
AST (ASAT) (UI/l)	201 ± 96	140 ± 47
ALT (ALAT) (UI/l)	98 ± 52	52 ± 24
Alkaline phosphatase (UI/l)	62 ± 23	70 ± 38
Cholesterolaemia (g/l)	1.6 ± 0.3	1.1 ± 0.2
Triglycerides (g/l)	1.1 ± 0.3	2.2 ± 0.3
Creatinine (mg/l)	5.1 ± 0.6	5.0 ± 0.7

\* JANVIER LABS 2011 Data, for an indicative basis



[www.janvier-labs.com](http://www.janvier-labs.com)

### Main application and research fields

- Behaviour
- General studies
- Immunology
- Metabolism
- Oncology
- Pharmacology
- Physiology, ageing
- Reproduction and embryology
- Teratology
- Toxicology

### Our added value

- The « JANVIER LABS Genetic Policy », a specific programme, guarantees less than 1% inbreeding per generation.
- Animals with the SPF or SOPF standards.
- A gentling policy for docile and easy-to-handle animals.
- Optimal stability conditions of our models during shipments, thanks to our dedicated and internal transport service.
- A scientific support with a team of Veterinarians and PhD.

### The available scientific bibliography:

Research has been conducted, all over the world, from models bred in our laboratories. Discover our updated bibliography of available studies on our Internet website, heading: **Customer Support**.

### Our additional offer



Laboratory Services



Transgenic Services