

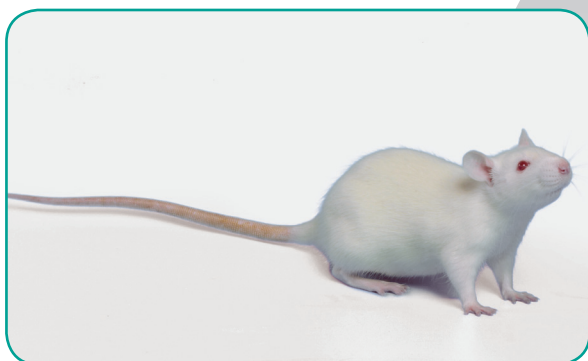


RESEARCH MODELS

Rats

Mice

Other rodents



WISTAR Rat

- **Strain name:** RjHan:WI
- **Type:** Outbred rat
- **Origin:** Zentralinstitut für Versuchstierzucht (Hannover) 1982 (from Allington Farm - UK - 1964)
- **Colour and related genotype:** Albino rat - *Tyr^c/Tyr^c*
- **Breeding:** Good breeder

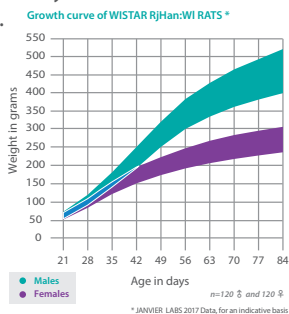
Description of our model

This strain was selected by DONALDSON in 1906 at the Wistar Institute (USA), from a batch belonging to Chicago University (RUSSEL-LINDSAY, 1979).

The **WISTAR** rat is an outbred stock, used in all fields of medical and biological research.

Its longevity and high rate of spontaneous tumours make it an ideal choice for ageing studies.

It is an albino strain, easy-to-handle, it is however slower learner than Long Evans rat.



Hematological parameters* of 6-13-week old WISTAR RjHan:WI rats			Reproductive data ¹	
Parameters	Male	Female		
Erythrocytes (10 ¹² /l)	8.6 ± 0.4	8.5 ± 0.4	Monogamous mating according Robertson System	
Hematocrit (l/l)	0.48 ± 0.02	0.46 ± 0.02	Litter size at birth	12
Hemoglobin (g/dl)	15.9 ± 0.7	15.7 ± 0.6	Weaning %	94
Mean corpuscular volume (fl)	56 ± 2	54 ± 2	Productivity index	2.48
Mean corpuscular rate (pg)	18.5 ± 0.7	18.4 ± 0.6	Sterility %	2
Hemoglobin concentration (g/dl)	33 ± 1	34 ± 1	Gestation time	Between 20 and 23 days • D20: 1 % • D21: 42 % • D22: 54 % • D23: 3 %
Blood platelets (10 ⁹ /l)	1225 ± 181	1306 ± 176		
Leukocytes (10 ⁹ /l)	15.3 ± 3.7	10.7 ± 2.9		
Neutrophils (10 ⁹ /l)	2.60 ± 0.90	1.68 ± 0.75		
Lymphocytes (10 ⁹ /l)	11.97 ± 3.14	8.44 ± 2.37		
Eosinophils (10 ⁹ /l)	0.21 ± 0.10	0.20 ± 0.10		
Monocytes (10 ⁹ /l)	0.36 ± 0.13	0.27 ± 0.14		
Basophils (10 ⁹ /l)	0.08 ± 0.09	0.05 ± 0.07		

* JANVIER LABS 2011 Data, for an indicative basis

Biochemical blood parameters* of 6-13-week old WISTAR RjHan:WI rats		
Parameters	Male	Female
Glucose (g/l)	6.0 ± 0.9	5.4 ± 0.8
Urea (g/l)	5.2 ± 0.7	5.5 ± 1.0
AST (ASAT) (U/l)	93 ± 20	89 ± 17
ALT (ALAT) (U/l)	32 ± 5	30 ± 8
Alkaline phosphatase (U/l)	135 ± 32	104 ± 32
Cholesterolaemia (g/l)	1.8 ± 0.3	1.9 ± 0.4
Triglycerides (g/l)	0.9 ± 0.3	0.5 ± 0.1
Creatinine (mg/l)	49.1 ± 3.7	47.6 ± 4.6

* BAYER CHROMSCIENCES 2012 Data, for an indicative basis



www.janvier-labs.com

Main application and research fields

- Ageing
- Infectious disease research
- Metabolism, nutrition
- Oncology
- Pharmacology
- Physiology
- Teratology
- Toxicology

Our additional offer



Laboratory Services



Transgenic Services

Our added value

- The « JANVIER LABS Genetic Policy », a specific programme, guarantees less than 1% inbreeding per generation.
- Animals with the SPF or SOPF standards.
- A gentling policy for docile and easy-to-handle animals.
- Optimal stability conditions of our models during shipments, thanks to our dedicated and internal transport service.
- A scientific support with a team of Veterinarians and PhD.

The available scientific bibliography:

Research has been conducted, all over the world, from models bred in our laboratories. Discover our updated bibliography of available studies on our Internet website, heading: Customer Support.