

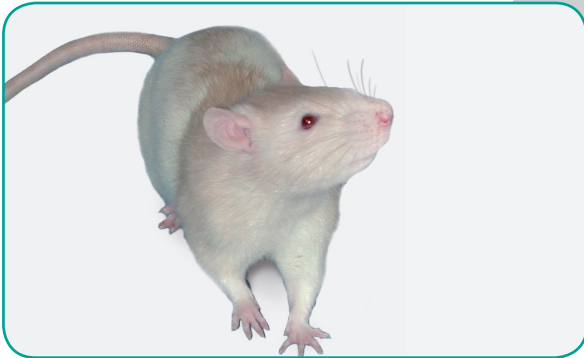


RESEARCH MODELS

Rats

Mice

Other rodents



FAWN HOODED Rat

- **Strain name:** Rjlbm(m):FH
- **Type:** Outbred rat
- **Origin:** Unilever Research Laboratorium (Vlaardingen Netherlands) -1987
- **Colour and related genotype:** hooded rat, *a/a, h/h, r/r* (red dilution eyes)
- **Breeding:** Easy to rear

Description of our model

The origin of the **FAWN HOODED** must always be given because characteristics will vary accordingly. It's an outbred stock that results from crosses of other outbred rats: German Brown, Lashley albino and Long Evans. Animals were then sent to different breeding facilities to be inbred: FH/Har (Iowa University), FHH, FHL (Erasmus University) and FH/Wjd (NY Dpt Health). JANVIER LABS's strain is descended from the FH/Wjd bred by NRF Maier from German brown and white Lashley.

It's described as a model for Chediak-Higashi syndrome (Meyers *et al.*, 1982) but Penner *et al.* (1988) do not share the same conclusion.

A key pathology is coagulation impairment (Tschopp *et al.*, 1972; Raymond and Dodds, 1975) because of the red-eyed dilution (*r*) mutation. It mainly affects platelets' dense granules. Homozygous rats have an abnormal functioning of platelets called storage pool deficiency (Prieur and Meyers, 1984). In these animals, the platelets have a defective secretion of coagulation mediators, leading to heavy bleedings (Tschopp *et al.*, 1972; Raymond and Dodds, 1975; Tschopp and Baumgartner, 1977; Kirchmaier *et al.*, 1990; Magro *et al.*, 1992).

FAWN HOODED rats exhibit hypertension leading to proteinuria and focal glomerular sclerosis. They show altered responsiveness of serotonergic mechanisms in the central nervous system, alcoholism and hypercortisolemia.



www.janvier-labs.com

Main application and research fields

- Atherosclerosis
- Blood factors
- Hypertension
- Psychiatry: serotonin dysfunction model, depression, anxiety, obsessive-compulsive disorder

Our added value

- The « JANVIER LABS Genetic Policy », specific programme, guarantees less than 1% inbreeding per generation.
- Animals with the SPF or SOPF standards.
- A gentling policy for docile and easy-to-handle animals.
- Optimal stability conditions of our models during shipments, thanks to our dedicated and internal transport service.
- A scientific support with a team of Veterinarians and PhD.

The available scientific bibliography:

Research has been conducted, all over the world, from models bred in our laboratories. Discover our updated bibliography of available studies on our Internet website, heading: **Customer Support**.

Our additional offer



Laboratory Services



Transgenic Services