



# RESEARCH MODELS

Rats

Mice

Other rodents



## GOLDHAMSTER *Mesocricetus auratus*

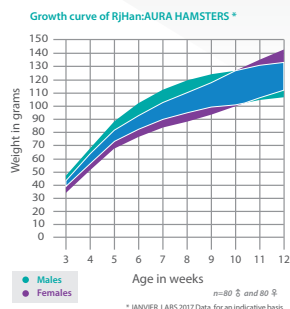
- **Strain name:** RjHan:AURA
- **Type:** Outbred hamster
- **Origin:** Zentralinstitut für Versuchstierzucht (Hannover) - 1990
- **Colour and related genotype:** Dark ears and black eyes
- **Breeding:** Difficult to rear

### Description of our model

Professor AHARONI collected the first **hamster** litter in 1930 during a zoological expedition to Syria, in order to find suitable hamsters for the study of Leishmaniosis. He gave them to Mr BEN MANACHEN, from Hebrew University, Jerusalem who bred them. ALDER started experiments on golden hamster in 1930. He distributed the animals in France and the UK. Later, some breeders were sent to the USA, Egypt and India.

Its head has two prominent black eyes and two small round ears. Its tail is just a short furry appendage. The hamster has cheek pouches, in which it can store considerable amounts of sustenance.

They are used in experimental tumour growth, metabolism studies, nutrition and caries studies. This model is also used in infectious and cardiovascular disease studies. It is also the only lab animal that can hibernate.



Reproductive data*	
Monogamous mating according Robertson System	
Litter size at birth	6.72
Weaning %	88
Productivity index	0.72
Sterility %	22
Gestation time	Between 17 and 19 days

\* JANVIER LABS 2011 Data, for an indicative basis



[www.janvier-labs.com](http://www.janvier-labs.com)

### Main application and research fields

- Bacteriology
- Immunology: vaccine
- Infectious pathology
- Metabolism
- Oncology
- Parasitology
- Toxicology
- Virology

### Our additional offer



Laboratory Services



Transgenic Services

### Our added value

- The « JANVIER LABS Genetic Policy », a specific programme, guarantees less than 1% inbreeding per generation.
- Animals with the SPF or SOPF standards.
- A gentling policy for docile and easy-to-handle animals.
- Optimal stability conditions of our models during shipments, thanks to our dedicated and internal transport service.
- A scientific support with a team of Veterinarians and PhD.

### The available scientific bibliography:

Research has been conducted, all over the world, from models bred in our laboratories. Discover our updated bibliography of available studies on our Internet website, heading: **Customer Support**.