



RESEARCH MODELS

Rats

Mice

Other rodents



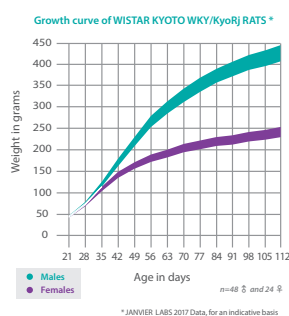
WISTAR KYOTO Rat

- **Strain name:** WKY/KyoRj
- **Type:** Inbred rat
- **Origin:** CSAL (Orléans, from Kyoto University, 1971) - 1978
- **Colour and related genotype:** Albino rat - *a/a, B/B, Tyr^c/Tyr^c, h/h*
¹MHC: *RT1^{lv2}* - Erythrocyte antigens: *RT2^a, RT8^b* - Lymphocyte antigene: *RT6^b, RT7^a*
- **Breeding:** High level of sterility, animal easy to rear

Description of our model

In 1960, Okamoto at Kyoto University selected Wistar rats based on the expression of spontaneous hypertension. At the same time, Wistar animals with "normal" blood pressure were selected to be used as a same-genetic-background normotensive control of the Spontaneously Hypertensive rats.

The **WISTAR KYOTO** strain is an inbred strain.



Reproductive data*	
Monogamous mating	
Litter size at birth	8,79
Weaning %	95
Productivity index	1,1
Sterility %	7
Gestation time	Between 20 and 23 days

* JANVIER LABS 2011 Data, for an indicative basis



www.janvier-labs.com

Main application and research fields

- Behaviour
- Normotensive control for SHR rat

Our added value

- The « JANVIER LABS Genetic Policy », specific programme, guarantees homozygosity of autosomal pairs.
- Animals with the SPF or SOPF standards.
- A gentling policy for docile and easy-to-handle animals.
- Optimal stability conditions of our models during shipments, thanks to our dedicated and internal transport service.
- A scientific support with a team of Veterinarians and PhD.

The available scientific bibliography:

Research has been conducted, all over the world, from models bred in our laboratories. Discover our updated bibliography of available studies on our Internet website, heading: **Customer Support**.

Our additional offer



Laboratory Services



Transgenic Services